

PICK WITH CARE!

 Pulling the fruit downwards off the branch causes damage!

 Lift the fruit upwards and gently give it a little twist.



Funded by
UK Government

POWERED BY
LEVELLING
UP

GREATER
MANCHESTER
DOING THINGS DIFFERENTLY



OLDHAM
TOWN CENTRE



King's Road Fruit Walk

Boasting a mix of Apple, Cherry, Damson and Wild Pear!

Enjoy a peaceful walk along the shaded path. From Park Lane, first pass the Damsons. A little further - can you spot the Wild Pear tree?

Scan the QR code for identification tips. Continuing towards Honeywell Lane, you'll find cherry and apple trees.



In spring, when the trees are in blossom, stand and listen out for the hum of bees enjoying the sweet nectar

Damsons - The dark blue damson fruits ripen in early September and are slightly soft to squeeze.

Cherries - Ripen around July, but are often eaten by the birds.

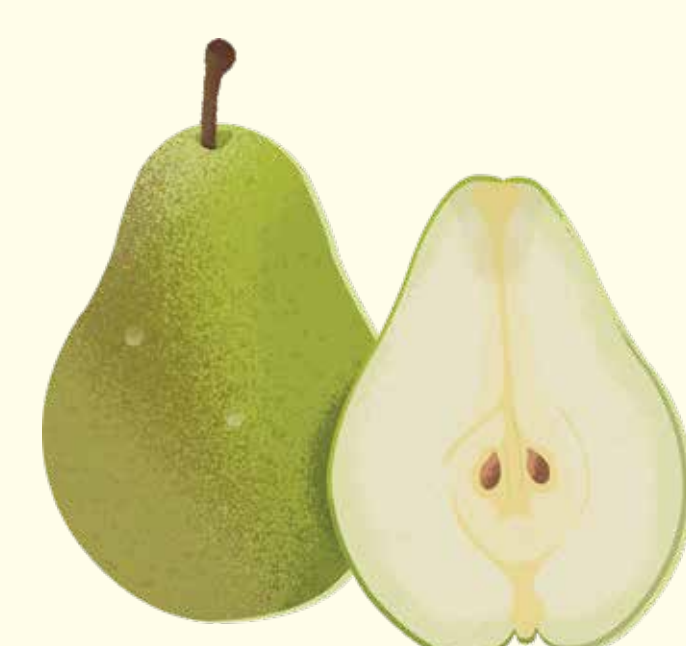
Apples - varieties here are ready for picking in September with a gentle half twist to release them.

Pears - The Wild Pear fruits are ripe but firm in autumn and best cooked; harvest time: October.



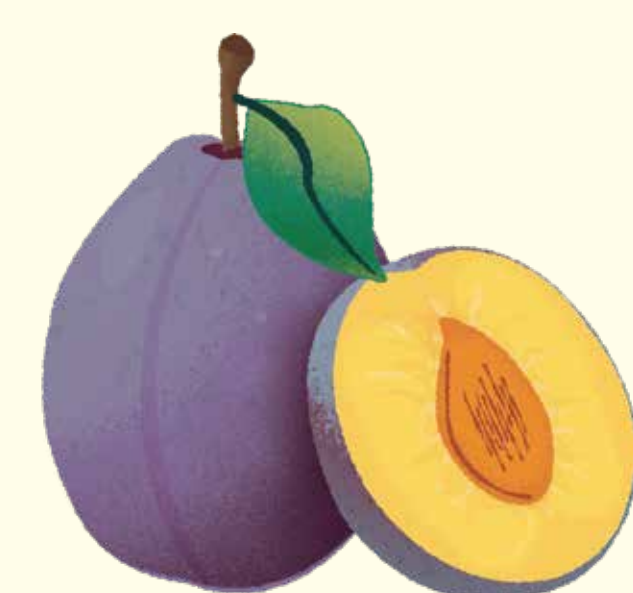
FOLLOW THE ROUTE!
SCAN HERE

The Oldham Fruit Route runs along the Lees Linear Park, the footpath and cycleway following the Delph Donkey - the old railway line from Mumps to Delph - and is accessible at many points from Alexandra Park to Grotton.



PEAR

Conference



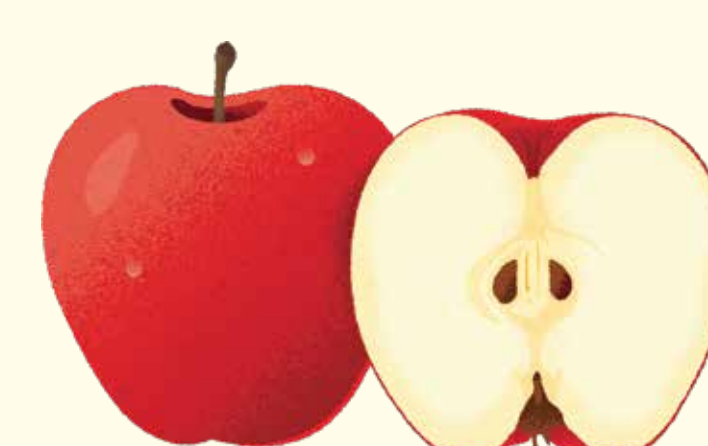
DAMSON

Merryweather



BLACKCURRANT

Ben Lomond



APPLE

James Greaves,
Jonagold and Elstar

OLDHAM FRUIT ROUTE



PLUM

Opal



RASPBERRY

Malling Jewel
and Autumn Bliss



BLACKBERRY

Black Butte



CHERRY

Stella